

Department of Psychiatry *and* Behavioral Sciences

Announcements

August Appointments

Michael Dennis, PhD Adjunct Professor. He is a Senior Research Psychologist for Chestnut Health System's Lighthouse Institute and the Director of its Global Appraisal of Individual Needs Coordinating Center (GAIN). He will also be working on addiction and prevention mental health research and helping develop new programs within the department in this area, and collaborate with other members of the faculty.

Christy Scott, PhD Adjunct Professor. Dr. Scott is the Research Director for Chestnut Health System's Lighthouse Institute, and the Director of their Chicago office, and the Director of the Illinois Health Survey Lab, Inc. She will bring her expertise in addiction and prevention mental health research to the department by helping develop new programs in research and to continue her collaboration with various members of the faculty.

Clinical News

Nicole Brown was promoted to Resource Coordinator in our NMG clinic. Nicole will serve as a resource for other PSR's, train new staff, coordinate schedules, assess work productivity, streamline billing issues and manage daily operational functions. We are so happy to see Nicole grow professionally within the department!

Michelle Cestaro LCSW (Started 8/31) Michelle is a new therapist in our NMG clinic. She has experience as a life enrichment director, case manager, and counselor. She managed the functions of the social services department of a 272 patient skilled nursing facility. Before that she was the a counselor and provided individual and group therapy for patients.

Misa Kwon LCSW (Started 8/17) Misa is a new therapist in our NMG clinic. She comes to us with extensive experience as a clinical therapist and case manager.

Education News

PGY1 **Aderonke Bamgbose Pederson, MD** was recently published in Academic Psychiatry. She was an integral part of both the project and paper. <http://www.ncbi.nlm.nih.gov/pubmed/26307364>.

Presentations and Conferences

Hatcher, A.E., **Massey, S.M.**, Clark, C.A.C., Burns, J.L., Cook, E.H., Espy, K.A., Wakschlag, L.S. Does MAOA Increase Susceptibility to Adverse Prenatal Exposures in Young Children? Poster abstract accepted for presentation at the American Academy of Child and Adolescent Psychiatry 62nd Annual Meeting in San Antonio, Texas, October 26 - 31, 2015.

Ms. Blessing Okafor presented her final research project, "Implementing Youth Prevention Programs in Urban African American Programs" at the 2015 Posner Symposium on August 14, 2015 in Evanston, IL. Ms. Okafor was the recipient of a Posner Fellowship award and was mentored by **C. Hendricks Brown, PhD** for eight weeks this summer.

Presentations and Conferences

Schuette, S.A., Backes, K.A., Wisner, K.L., Massey, S.H. Predictors of antenatal depression: Is pre-pregnancy body mass index an independent risk factor? Poster abstract accepted for presentation at the Second Biennial Perinatal Mental Health Conference in Chicago, IL, November 4 - 6, 2015.

Katherine Wisner, MD, MS, and Catherine Stika, MD, presented Practical Psychopharmacology during Pregnancy and Breastfeeding, a four hour workshop; and **Jacqueline Gollan, PhD,** presented Behavioral Activation for Perinatal Depression, an eight hour workshop, at the Walton Family Foundation Training, Translational Research in Perinatal Health: Laboratory to Bedside to Community Practice at Denver Health, Denver Colorado, August 2015.

Publications

Burnett-Zeigler I, Schuette S, Victorson D, Wisner KL. A review of mind body approaches to treat depression and anxiety among disadvantaged populations. Submitted.

Gollan JK, Wisniewski SR, Luther JF, Eng HF, Sit DK, Wisner KL. Factor analyses of the Edinburgh Postnatal Depression Scale in an obstetrical population of over 13,000 women. Submitted.

Janicak PG, Dokucu ME. Transcranial magnetic stimulation for the treatment of major depression. Neuropsychiatric Disease and Treatment.

Smith MJ, Bell MD, Wright MA, Humm LB, Olsen D, Fleming MF. Virtual Job Interview Training and 6-Month Employment Outcomes in Adults in Recovery for Addiction. Journal of Vocational Rehabilitation.

Austin M-P, Kingston D, Reilly N, **Wisner KL.** Depression screening in a collaborative care setting for perinatal women: Is the time long overdue? Submitted.

Barkin JL, **Wisner KL, Bromberger JT, Beach SR, Wisniewski SR.** Factors associated with maternal postpartum functioning in women with positive screens for depression. Submitted.

Bérard A, **Wisner KL, Hultzsch S, Chambers C.** Field studies versus database studies on the risks and benefits of medication use during pregnancy: Distinct pieces of the same puzzle. Submitted.

Connolly ME, Buchanan A, Wang X, Hoxha D, Satyshur M, **Wisner KL, Gollan JK.** Neural differences characterize the postpartum period during the processing of affective stimuli: An fMRI pilot study. Submitted.

Kim DR, Wisniewski SR, Luther JF, Eng HF, Dills J, Pinheiro E, **Wisner KL.** Is late pregnancy serotonin reuptake inhibitor use associated with postpartum hemorrhage? Submitted.

Media

Sheehan Fisher, PhD, psychiatry was interviewed by Huffington Post for an article about postpartum depression in fathers. http://www.huffingtonpost.com/entry/why-postpartum-depression-in-dads-goes-unrecognized-and-ignored_55db279fe4b0a40aa3ab600e

Grants and Awards

C. Hendricks Brown, PhD (PI); National Institute on Drug Abuse; Center for Prevention Implementation Method for Drug Abuse & Sex Risk Behavior.

C. Hendricks Brown, PhD (PI); National Institute on Drug Abuse; Supplemental funds for the prevention of drug abuse and drug related HIV/AIDS prevention, and work with high-risk populations methods.

C. Hendricks Brown, PhD (PI); National Institute of Mental Health (via University of Illinois at Chicago); Primary Care Internet-Based Depression Prevention for Adolescents.

Grants and Awards, continued

Crystal Clark, MSc, MD, was awarded a renewal on the K12 Career Development Award through the Building Interdisciplinary Research Careers in Women's Health (BIRCWH) program at Northwestern University. Dr. Clark was previously awarded two years of funding on the K12 to support her research on the study of lamotrigine pharmacokinetics in pregnant and postpartum women with Bipolar Disorder. With the renewal she will be able to extend this work to investigate how physiological changes and genetic impacts quetiapine concentration across pregnancy.

Tracy Fehrenbach, PhD (PI); Substance Abuse and Mental Health Services Administration (via One Hope United); National Child Traumatic Stress Initiative (NCTSI) Category III, Community Treatment and Services (CTS).

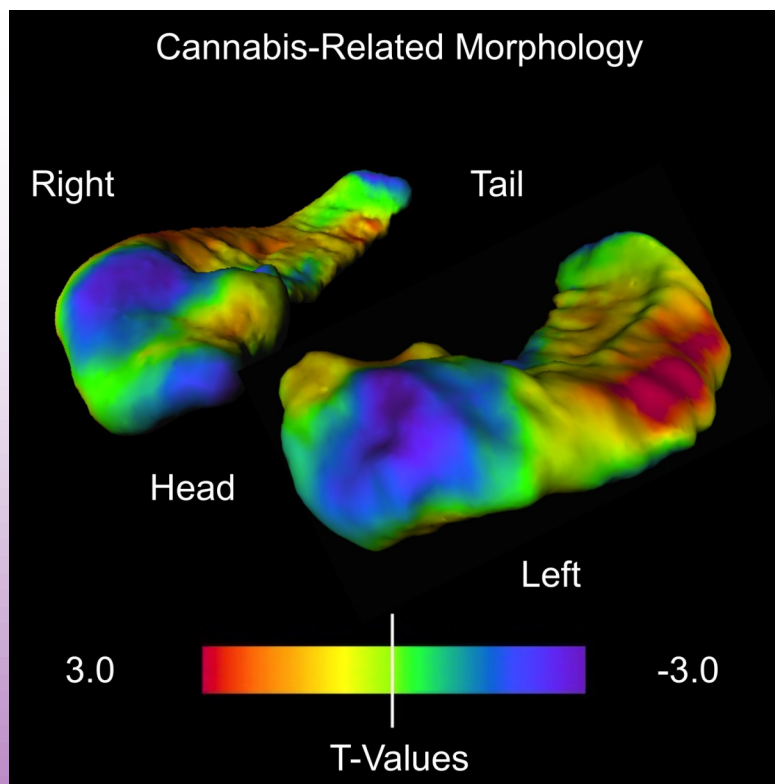
Michael F Fleming, MD, MPH (PI); National Institute on Alcohol Abuse and Alcoholism; Newborn Phosphatidylethanol Screening to Detect Fetal Alcohol Exposure in Uruguay.

Herbert Y Meltzer, MD (PI); American Foundation for Suicide Prevention; Identifying genetic basis for suicide prevention by clozapine: the EGFMAPK- ERK signaling pathway.

Herbert Y Meltzer, MD (PI); Eli Lilly and Company; Dopamine D1 Positive Allosteric Modulator (PAM) Research Proposal.

Emily S. Miller, MD, MPH, received a grant from The Alumnae of Northwestern University to fund her proposal, The Effect of Magnesium on Maternal Mood, Cognitive Function, and Birth Experience.

An image depicting the hippocampus from **Matthew Smith, PhD's** recent study of young adults who abused cannabis as teens was featured on the cover of the September issue of *Hippocampus*. Additional authors from our Department on the publication included **Derin Cobia PhD, James Reilly PhD, Lei Wang PhD, Hans Breiter PhD, and John Csernansky, MD**.



If you would like to submit an item to the newsletter, please email Rachel Rodriguez at rrodrig3@nm.org for information.